

AL-LED-D2D Series
LED Yard Blaster

Features

- High output LED delivers enough light to hit the broad side of a barn.
- Replaces 175W mercury vapor and 150W HPS barn lights.
- Durable finish withstands harsh environments.
- 5 year manufacturer warranty
- 4kV Surge Protection
- UL Listed for wet locations

Applications

- Barn lights
- Exterior stairways
- Exterior cat-walks
- Security lights

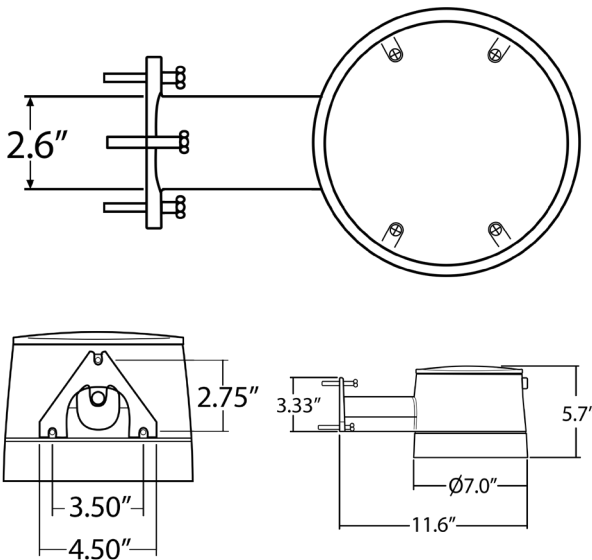
Certifications

Fixture Details

Model Name	AL-LED-D2D
Power Consumption	26Watt
Luminous Efficacy	> 96 lm/W
Luminous Flux	2,689 lm
Color Temperature	5000K
Color Rendering	> 67
Beam Angle	160° (Symmetric)
Life Time Rating	> 100,000 Hours
Input Voltage	120 VAC
Frequency	50 / 60Hz
Operation Temperature	Minimum Starting Temperature -40 °F (-40°C)
Size (L x W x H)	11.6" x Ø7.0" x 5.7"
Weight	6.4lbs (2.9Kg)
Body	Die-cast Aluminum
Optic	High-reflectance white paint
Cover	High-impact, frosted polycarbonate len
Finish Coating	Polyester Power Coating
Wet Location Rating	UL Listed for wet location
Mounting Options	Pole mount, wall mount

Dimensional Drawings

AL-LED-D2D


Ordering Guide

Series	Type	CCT	Wattage	Options
AL-LED-D2D	BL: Barn Light	5,000K	26: 26watts	ARM: Round Pole Arm

Adding an Abaco Lighting approved motion sensor system to your lighting upgrade project will further enhance energy savings and create an even faster payback. Specifications are subject to change with or without notice.